

4/14/2014

## Highbay LED - 4 Foot Linear Flat Profile Design



Project:

Catalog#:

Approved by:

### Description

HLED series highbay LED fixture offers quality lighting and excellent energy savings compared to linear fluorescent and HID highbay fixtures. This fixture offers multiple options to meet any need.

### Applications

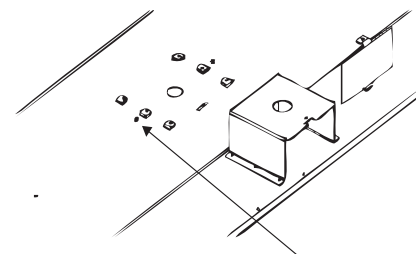
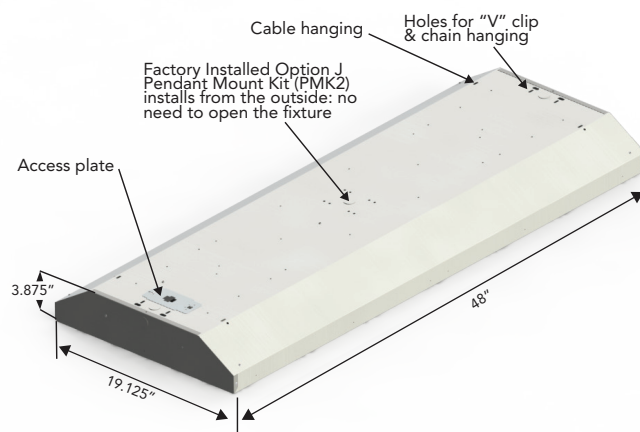
Warehouse                      Cafeteria  
Manufacturing Facility      Auditorium  
Gymnasium

### Features

- Full body construction (white finish)
- Access plate on back of the fixture for quick and easy wiring
- Easy access to lens through end of fixture
- LED's available in 4000K and 5000K with CRI 85
- Up to 79% lumen maintenance at 60,000 hours
- Driver standard with 0-10v dimming
- Wide distribution reflector
- Listings: UL and cUL Listed for damp locations. RoHS compliant, and luminaire complies with IESNA LM-79 and LM-80 standards.
- Suitable for ambient temperatures from -40°C to 50°C (-40°F to 122°F)\*.  
\*HLED20 series suitable for ambient temp. up to 45°C (113°F).
- Warranty: 5 years
- Available options:
  - o Wireguard
  - o Clear, Frosted, and Prismatic Acrylic Lens
  - o HV (High Voltage option) 347-480v
  - o Emergency ballast 700 lumens
  - o Modular Power receptacle (standard using the High Bay Connector System from Flex-Tec)
  - o Cord set options
  - o Occupancy Sensor
  - o J box configuration for pendent mounting

### Benefits

- Energy Saving compared to HID systems and fluorescent systems
- Exceptional color rendering
- High system efficacy up to 111 Lm/W
- Long LED Life
- System Designed, Manufactured, Tested, and Approved by Howard Industries in Mendenhall, Mississippi.
- Compliant with safety and performance standards.



Pendant Mount lances included only if Factory Installed Option "J" is selected.



Visit [www.designlights.org](http://www.designlights.org)  
for the Qualified Products List



Visit [www.lightingfacts.com](http://www.lightingfacts.com)  
for a list of qualified products.

Specifications subject to change without notice.

4/14/2014

# Highbay LED - 4 Foot Linear

## Flat Profile Design

Project:	
Catalog#:	
Approved by:	

### Ordering Information

Model Family	Lumens	Distribution	CRI/CCT	Driver	Input Volts	Factory Installed Options	Cordset Options (see customer service for other cordset options)	T B A	Pack.
<b>HLED</b>	<b>11</b>	<b>W</b>	<b>4K</b>	<b>D</b>	<b>MV</b>	<b>000</b>	<b>00</b>	<b>0</b>	<b>I</b>
HLED	08: 8,400 Lumens 11: 11,200 Lumens 12: 12,300 Lumens 20: 20,600 Lumens 24: 24,600 Lumens	W: Wide Dist.	4K: 4000K CRI 85 5K: 5000K CRI 85	D: 0-10v Dimming Driver	MV: 120-277v HV: 347-480v	000: No FIOs A: Occ Sensor P: Occ Sensor w/built-in Photocell B: Emergency Ballast <sup>1</sup> C: Clear Lens <sup>2C</sup> D: Frosted Lens <sup>2D</sup> E: Prismatic Lens <sup>2E</sup> G: Wireguard I: Special Wiring Instructions J: J-box configuration <sup>3</sup>	00: Standard Disconnect 01: 6' SJT 18/3, no plug 03: 6' SJT 18/3 L5-15, twist lock 120v 05: 6' SJT 18/3 5-15non twist lock 120v 07: 6' SJT 18/3 L7-15 twist lock 277v 09: 6' SJT 7-15 non twist lock 277v		I: Single

1. Emergency Ballast; 120 or 277v only. Please specify at time of request

2C. Clear acrylic lens, 0.080" thick. Reduces lumen output by ~7%.

2D. White acrylic lens, 0.060" thick. Reduces lumen output by ~10%

2E. Prismatic (P12) acrylic lens, 0.125" thick. Reduces lumen output by ~20%

3. Unless otherwise specified, fixture will include field installed J-box. Supply wires will exit the center of the fixture, not the access plate. J-box can be installed without entering the fixture.

Model#†	Lumens	Input Watts	Lm/W	CCT/CRI	Suggested Fluorescent Replacement	Suggested HID Replacement	TM-21 Lumen Maintenance† (60,000 hours)	Theoretical L70† (hours)
HLED08W4KDMV00000I	8,389	76	111	4000K/85	3-Lamp T8	175/150	> 79%	93,000
HLED11W4KDMV00000I	11,205	104	108	4000K/85	4-Lamp T8	250	> 79%	94,000
HLED12W4KDMV00000I	12,299	113	109	4000K/85	4-Lamp T8	250	> 78%	89,000
HLED20W4KDMV00000I	20,586	191	108	4000K/85	4-Lamp T5HO; 6-Lamp T8	400	> 75%	77,000
HLED24W4KDMV00000I	24,597	227	109	4000K/85	6-LampT5HO; 8-Lamp T8	400	> 76%	81,000
HLED08W5KDMV00000I	8,190	77	107	5000K/85	3-Lamp T8	175/150	> 79%	93,000
HLED11W5KDMV00000I	10,939	105	104	5000K/85	4-Lamp T8	250	> 79%	94,000
HLED12W5KDMV00000I	12,007	115	105	5000K/85	4-Lamp T8	250	> 78%	89,000
HLED20W5KDMV00000I	20,098	194	104	5000K/85	4-Lamp T5HO; 6-Lamp T8	400	> 75%	77,000
HLED24W5KDMV00000I	24,014	230	105	5000K/85	6-LampT5HO; 8-Lamp T8	400	> 76%	81,000

† Other configurations are available

‡ Tested at 25°C ambient

Specifications subject to change without notice.

### Sample Ordering Number:

HLED 11 W 4K D MV 000 00 I

Highbay LED Series

11,200 Delivered Lumens

Wide Distribution

4,000K (CRI 85)

0-10 Dimming Driver

Multi-volt (120-277v)

No Factory Installed Options

No Cordset

Single Packaging

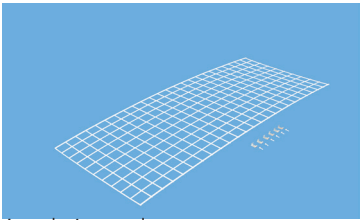
4/14/2014

Project:	
Catalog#:	
Approved by:	

# Highbay LED - 4 Foot Linear

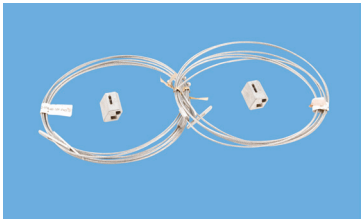
## Flat Profile Design

### Field Installed Options Ordering

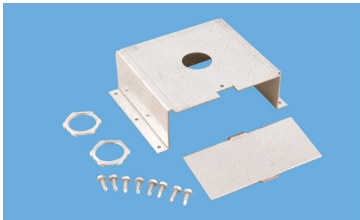


Actual wireguard appearance may vary

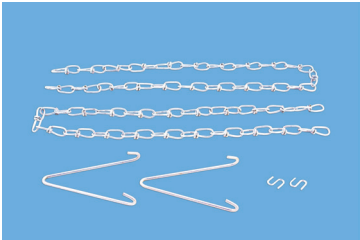
HLED-WG  
Wire Guard



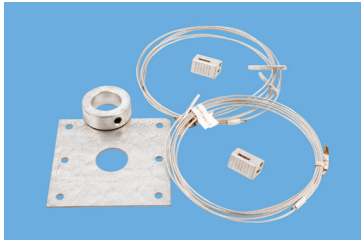
HFA-WCH  
Wire Cable Hanging Kit  
(2 pcs per kit)



HF-PMK2  
Pendant Mount Kit  
with 1.0" diameter through hole



HF-2CV (2 foot)  
HF-3CV (3 foot)  
Hanging Chain & V-clips



HF-SK1  
Stabilizer Kit  
(Hub, collar and wire cable)

Model #	Description
HF 2CV	2' hanging chain & v-clips
HF 3CV	3' hanging chain & v-clips
HF-PMK2	Pendant mount kit: Cover, J-box, screws and lock nuts
HF-SK1	Stabilizer kit: Hub, collar and wire cable
HF-WCH	Wire cable hanging kit (2 pcs. Per kit; 5ft. Cable)
HF-WCH-SS	Stainless Steel Wire cable hanging kit (2 pcs. Per kit)
HLED-WG	Wire Guard

Specifications subject to change without notice.

4/14/2014

# Highbay LED - 4 Foot Linear

## Flat Profile Design

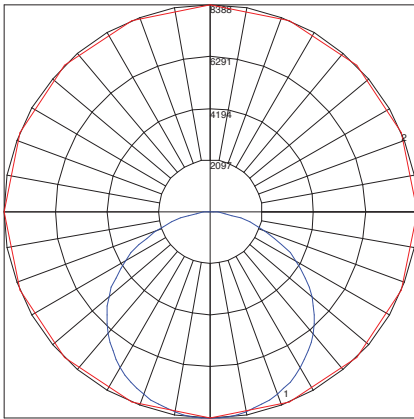
Project:

Catalog#:

Approved by:

### Photometric Data

HLED24W4KDMV ITL80153.IES	
Input Power	227W
Efficacy Lm/W	109
Lumen Output	24,597



Maximum Candela = 8388 Located At Horizontal Angle = 0, Vertical Angle = 0  
 # 1 - Vertical Plane Through Horizontal Angles (0 - 180) (Through Max. Cd.)  
 # 2 - Horizontal Cone Through Vertical Angle (0) (Through Max. Cd.)

### Zonal Lumen Summary

Zone	Lumens	% Fixture
0-30	6638.79	27.00
0-40	10989.37	44.70
0-60	19760.59	80.30
0-90	24597.44	100.00
0-180	24597.44	100.00

### Luminance Data

In Candela/SQ. M at 0° plane

Angle	Average
45	14517
55	14143
65	13084
75	10899
85	6220

Howard Lighting

**Light Output (Lumens)** 24597

**Watts** 226.5

**Lumens per Watt (Efficacy)** 108

**Color Accuracy**

Color Rendering Index (CRI) 85

**Light Color**

Correlated Color Temperature (CCT) 4012 (Bright White)

2700K 3000K 4500K 6500K

**LED Lumen Maintenance Projection**

at 25,000 Hours at 25°C Ambient\* 89.36%

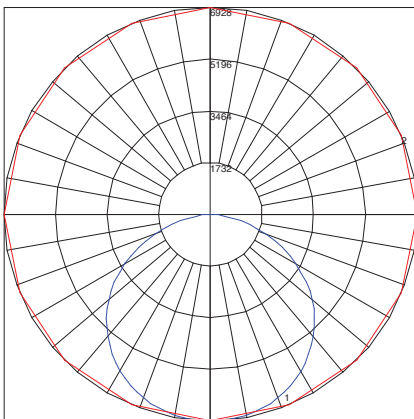
**Warranty\*\*** Yes

All results, except LED Lumen Maintenance, are according to IESNA LM-79-2008: Approved Method for the Electrical and Photometric Testing of Solid-State Lighting. The U.S. Department of Energy (DOE) verifies product test data and results.

\* Based on TM-21 projections for the light source.  
 \*\* See [www.lightingfacts.com/products](http://www.lightingfacts.com/products) for details.

Registration Number: -NJ4XQJ (1/7/2014)  
 Model Number: HLED24W4KDMV  
 Type: Luminaire - Industrial

HLED20W4KDMV ITL80152.IES	
Input Power	191W
Efficacy Lm/W	108
Lumen Output	20,586



Maximum Candela = 6928 Located At Horizontal Angle = 0, Vertical Angle = 0  
 # 1 - Vertical Plane Through Horizontal Angles (0 - 180) (Through Max. Cd.)  
 # 2 - Horizontal Cone Through Vertical Angle (0) (Through Max. Cd.)

### Zonal Lumen Summary

Zone	Lumens	% Fixture
0-30	5477.42	26.60
0-40	9061.05	44.00
0-60	16333.16	79.30
0-90	20586.26	100.00
0-180	20586.26	100.00

### Luminance Data

In Candela/SQ. M at 0° plane

Angle	Average
45	12044
55	11871
65	10845
75	9038
85	5209

Specifications subject to change without notice.



Visit [www.designlights.org](http://www.designlights.org)  
 for the Qualified Products List