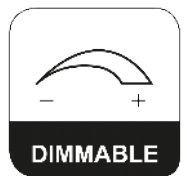
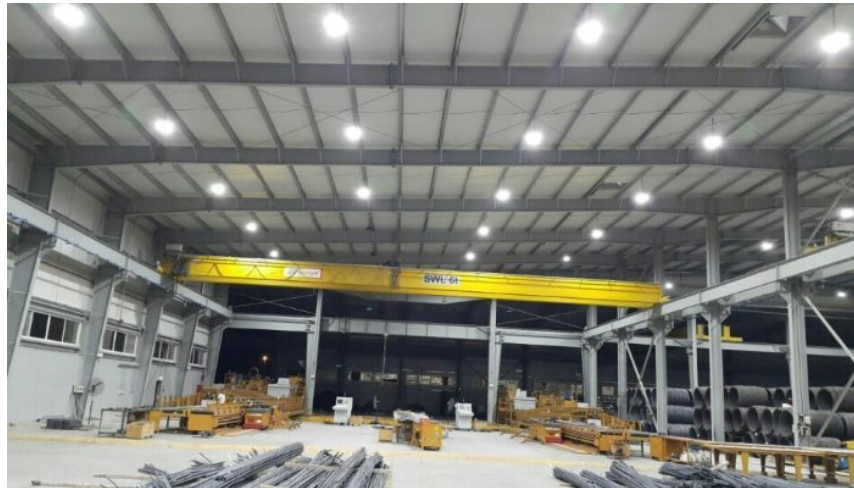
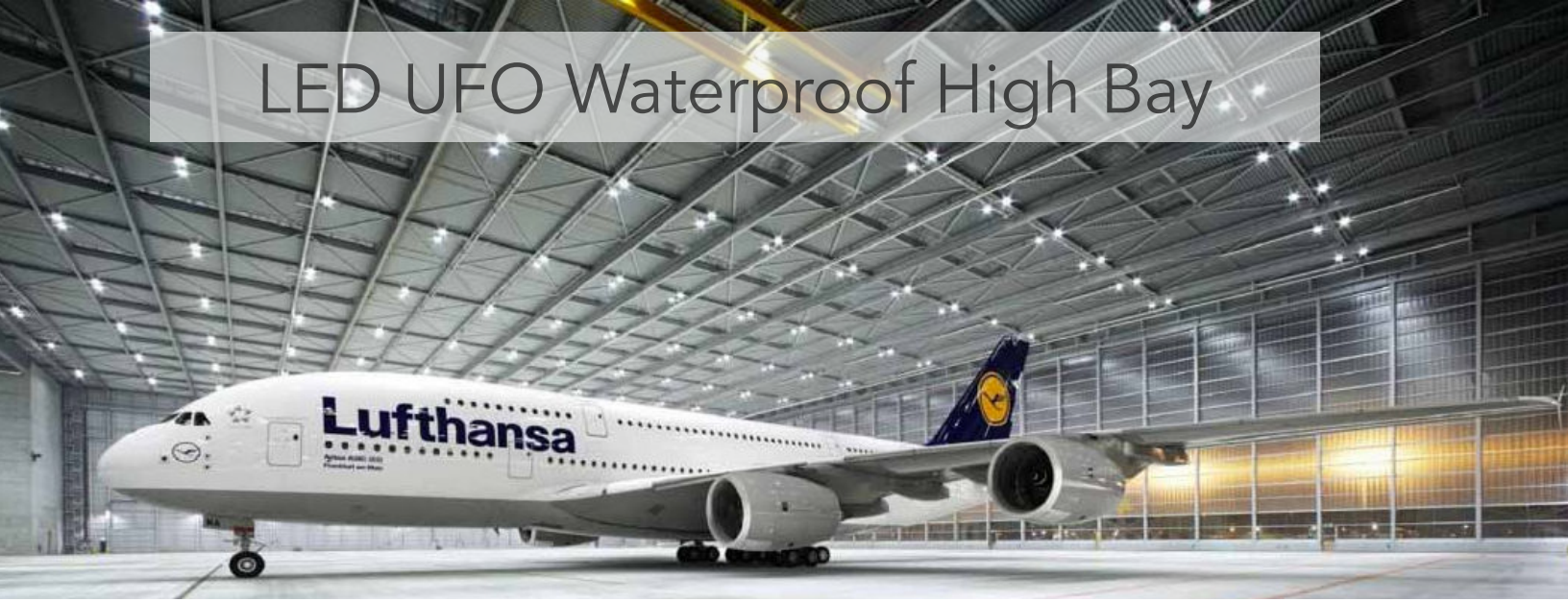


# LED UFO Waterproof High Bay



**ALTECH**  
ELECTRONICS

## Contact Us:

7057 Marcelle St,  
Paramount, CA 90723  
800-640-0386  
[www.altechelectronics.com](http://www.altechelectronics.com)  
[sales@altechelectronics.com](mailto:sales@altechelectronics.com)

# Specifications

Model Number	AE-L-HBUFO-100	AE-L-HBUFO-150	AE-L-HBUFO-240
DLC #	U-UHB-100-#	U-UHB-150-#	U-UHB-240-#
DLC Partner	Ultron Industries		
Input Wattage	100W	150W	240W
Replacement Wattage	400W	600W	1000W
Input Voltage Range	120-277V		
Delivered Lumens	13300 lm	19500 lm	30650 lm
Lumen Efficiency	133 LM/W	132 LM/W	143 LM/W
Color Rendering Index (CRI)	83+		
Color Temperature (Kelvin)	3000K-5700K		
Beam Angle	100°		
Power Factor	0.99		
Frequency	50/60Hz		
MAX THD (%)	15		
Min. Ambient Temp	-30.0°F / -34.4°C		
Max. Ambient Temp	140.0°F / 60.0°C		
IP Rating	IP67		
Dimming Compatible	3 in 1 dimming function (1~10Vdc or PWM signal or resistance)		
Product Weight	13.4LB / 6.1KG	15.0LB / 6.8KG	15.7LB / 7.1KG
Product Height (100°)	6.7" / 170mm	6.7" / 170mm	6.7" / 170mm
Product Diameter (100°)	13.2" / 330mm	13.2" / 330mm	13.2" / 330mm
Materials	Die Cast Aluminum		
Finish	Black (Default)		
LM70 Life Time	100,000 Hours		
UL/cUL	E481056		
DesignLights Consortium®	Pending		
CE	YES		
FCC	YES		
Warranty	10 Years		

MeanWell HBG Series Driver



Style Design  
Perfect Solution for High/Low Bay Lighting

Hot Cellular Effects  
Heat Dissipation Structure  
Temperature Rising  $>30^{\circ}\text{C}$



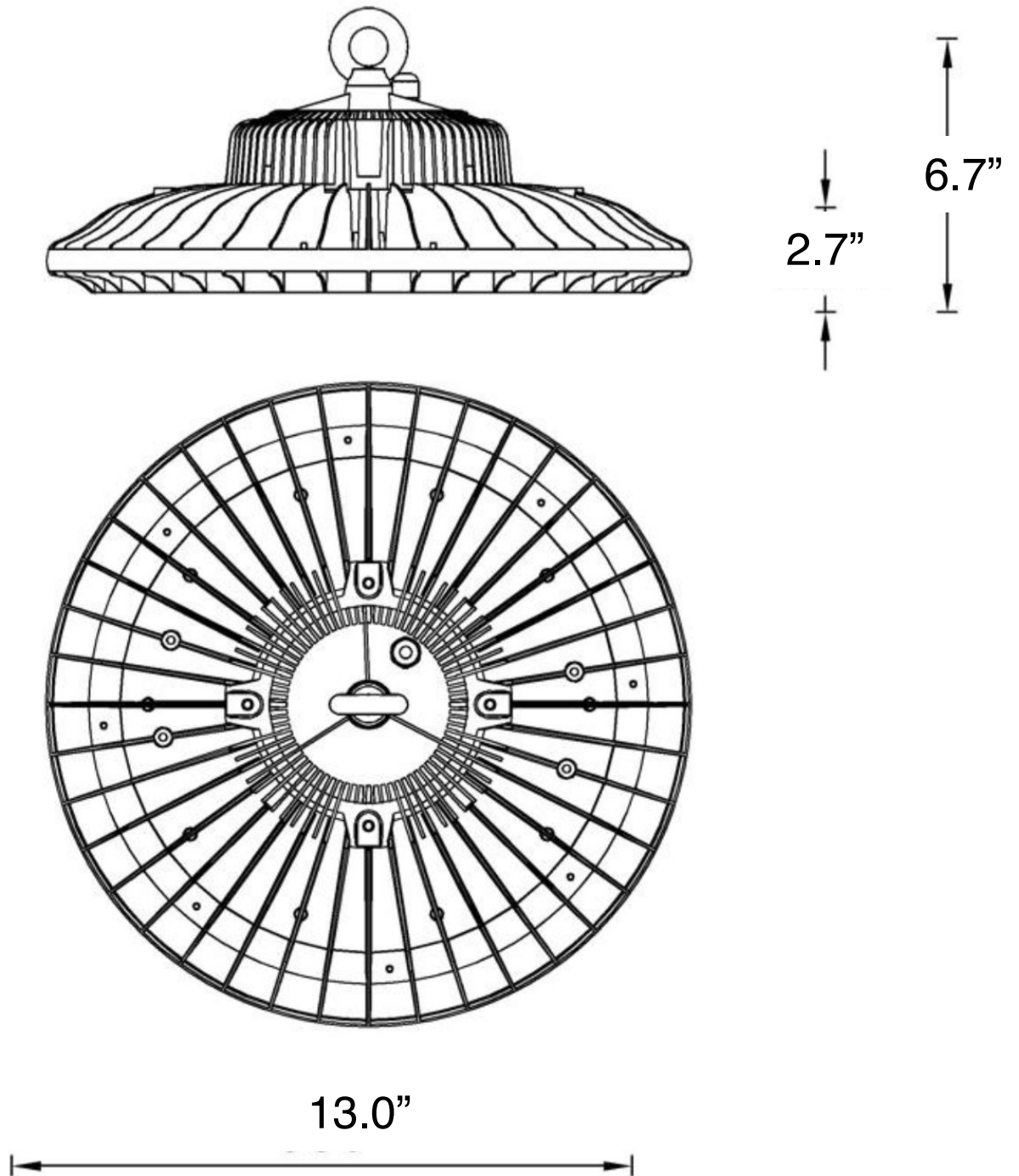
Optional Beam Angle:  
 $60^{\circ}$ ,  $90^{\circ}$ ,  $120^{\circ}$

Philips Lumileds Luxeon 3030 chip





## Dimensions



## Note:

Please read this entire manual to fully understand and safely use the luminaire. The products can be used at the voltage of 100-277V AC, 50/60HZ, suitable for indoor and outdoor, moisture proof and dust proof. Specifications are subject to change without notice. Please visit [www.altechefficiency.com](http://www.altechefficiency.com) for the most recent product information.

## Unpacking:

1. Unpack and carefully examine the product.
2. Report any damage and save all packing materials if any part(s) were damaged during shipping.
3. Do not attempt to use the fixture if it is damaged.

## Before You install:

1. Before installing any light fixtures, read and understand all cautions, warnings, instructions and product labels. Failure to do so can result in injury and/or void the warranty.
2. CONSULT A QUALIFIED ELECTRICIAN TO ENSURE CORRECT BRANCH CIRCUIT CONDUCTOR.
3. The product should be installed and operated by a qualified electrician or technician in accordance with relevant local codes.
4. Risk of electric shock. Ensure that main power source is off when wiring or soldering the sections of the product.

## Maintenance:

1. Disconnect the product from the power supply prior to cleaning.
2. Use a dry or slightly moistened cloth for cleaning.
3. Never use any chemicals or abrasive materials for cleaning.

## Installation Instructions:

1. Choose an appropriate and secure installation area.
2. Hang high bay with the hook and use a chain (not provided) if necessary to adjust the height of the fixture.
3. Connect the input and ground wires of the fixture to the power supply. **Brown is live. Blue is neutral. Green/Yellow is ground.**
4. This fixture is designed for years with minimum care. For optimum performance, periodically clean the lens with a mild, non abrasive glass cleaner and soft cloth. DO NOT use solvents or cleaners containing abrasive agents. When cleaning the fixture, make sure you have the power turned off and do not spray liquid cleaner directly onto the LED, socket or wiring.