



Description

Altech's Hyper Series Area Light LED fixture debuted at Lightfair in 2018. With a higher lumen output, it is sure to provide any project with more than enough coverage.



Applications

- Auto Dealerships
- Parking Lots
- Outdoor Courts
- Sports Fields
- Outdoor Malls
- Public Parks

Details

- IP Rating: IP67
- EPA Rating: 0.9
- Materials: Aluminum
- Lens: Polycarbonate
- L70 Life: 200,000 Hours
- Warranty: 10 Years
- CRI: 80+
- Qualification: UL, DLC Premium, FCC, CE, RoHS
- Driver Man.: YG (100-277V), Inventronics (480V)
- Chip Man.: Philips

Electrical

- Power Factor: 0.99
- Frequency: 50/60 Hz
- Max THD: 10%
- Operating Temp.: -40° F to 150° F
-40° C to 65° C
- Dimming: 3 in 1 (Resistance, PWM, 1-10V)

DLC #:	U-HALM-60	U-HALM-90	U-HALM-120	U-HALM-150
MODEL #:	AE-L-ALHS-M-60	AE-L-ALHS-M-90	AE-L-ALHS-M-120	AE-L-ALHS-M-150
Input Wattage:	60W	90W	120W	150W
Lumens:	10,020 lm	15,750 lm	20,400 lm	24,750 lm
Equivalent:	300W MH	450W MH	600W MH	750W MH

Ordering Information

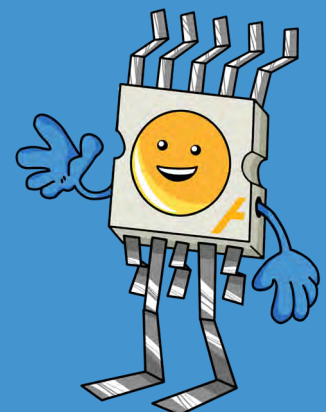
Example: AE-L-ALHS-M-120-185-50K-T3-1-TR-P-BR

Wtg	Lumen Package	Color Temp.	Distribution	Input Voltage	Mounting	Options	Finish
60	165 - 165 lm/W*	30K - 3000K	T3 - Type 3*	1 - 100-277V*	A - 6" Extended Arm*	P - Photocell	BZ - Bronze*
90	185 - 185 lm/W	40K - 4000K	T4 - Type 4	2 - 480V	SF - Slip Fitter	MS - Motion Sensor	BL - Black
120		50K - 5000K*	T5 - Type 5		TR - Trunnion	EI - Emergency Inverter	WH - White
150		57K - 5700K				(X)P - (X)-Pin Twist-Lock Base (X = select one: 3,5, or 7)	GR - Gray
						WP(X) - Additional Whip (X = specified length in ft.; 1.67' is standard)	SP - Other

*Standard

Additional Notes

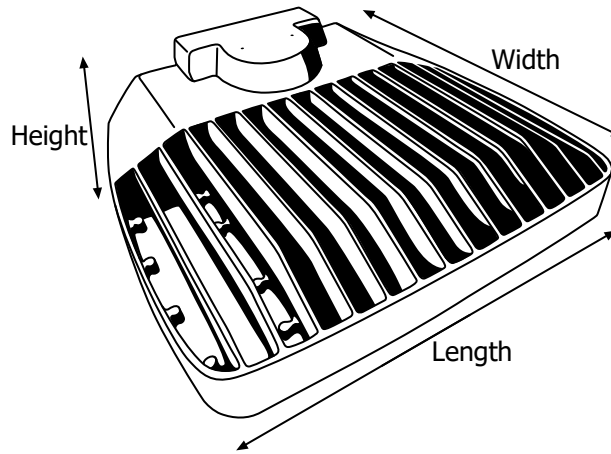
- Only 5000K, 100-277V are stocked locally, check for ETA's
- Life is more than 27 years operating 10 hours a day, based on L70 standards
- Hot-start delays: .08 seconds (YG driver)
- Additional charges apply for items under "Options" column and non-standard colors



Lumen Output (based on 5000K)

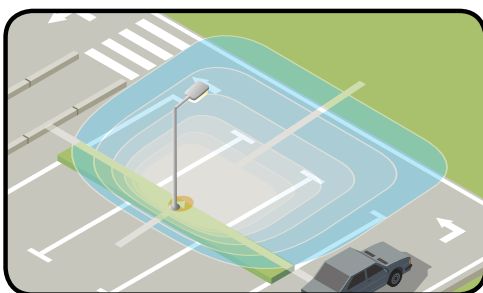
System Watts	Dist. Type	Lumens	lm/W	B	U	G	Lumens	lm/W	B	U	G
60	T3	9,831	164	2	0	2	11,092	185	2	0	2
	T5	9,943	166	3	0	1	11,124	185	3	0	1
90	T3	14,747	164	3	0	3	16,637	185	3	0	3
	T5	14,915	166	3	0	1	16,655	185	3	0	1
120	T3	19,827	165	3	0	3	22,184	185	3	0	3
	T5	20,427	165	4	0	2	22,192	185	4	0	2
150	T3	24,578	164	3	0	3	27,793	185	3	0	4
	T5	24,741	165	4	0	2	27,742	185	4	0	2

Fixture Dimensions and Weight

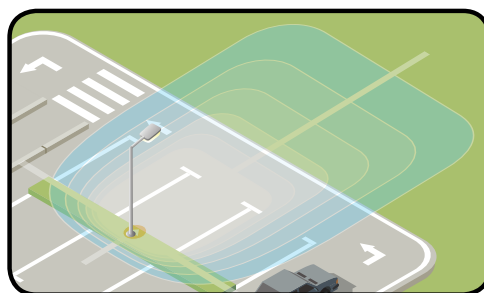


Length	Width	Height	Weight
13.75 in.	12.75 in.	3.6 in.	12 lb.
349 mm.	323 mm.	91 mm.	5.4 kg.

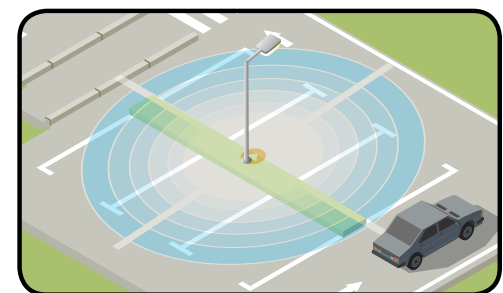
Distribution Types



Type 3



Type 4

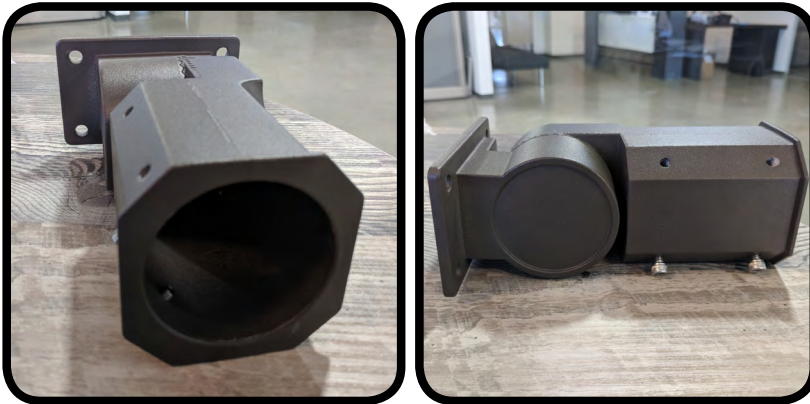


Type 5

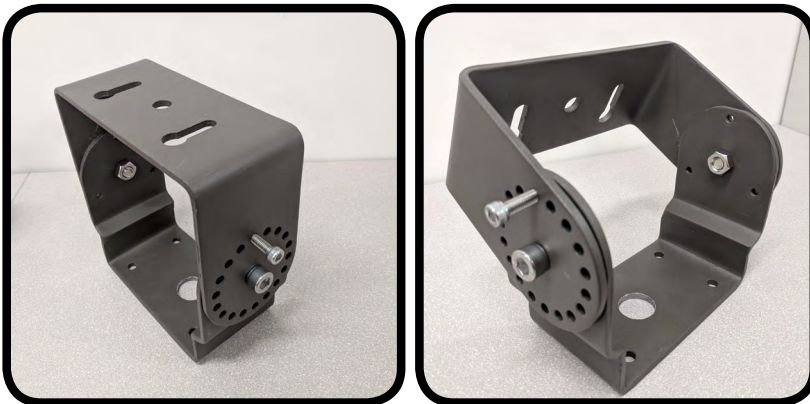
Mounting Options



6-Inch Arm Mount



Slip Fitter Mount



Trunnion Mount

AREA LIGHT HYPER SERIES, MEDIUM

Wiring Precaution

The international color scheme is brown (hot), blue (neutral) and green/yellow (ground) wiring. Always disconnect power when installing or troubleshooting. Consult a licensed technician.

FG (Green/Yellow)
AC/L (Brown)
AC/N (Blue)



Fixture-to-Mount Installation

1. Match screw holes on the mount with the fixture. (Refer to image on the right)
2. Run the wire from the fixture through mount.
3. Hand-tighten the screws into place.
4. Tighten the screws with a tool to secure it.
5. Installation complete.

