



# SWP Series LED Fixture

## Slim Wall Pack LED Light Fixture

Ushio America's SWP series slim, low-profile LED wall pack has a contemporary design and is engineered using a high quality die-cast aluminum housing and premium LEDs which delivers bright, crisp light.

Installation is made simple and easy with a hinged junction box. Optional 1/2" knuckle mount or adjustable swivel bracket will provide you the flexibility for your application.

The SWP series is ideal for low level pathway lighting as well as landscape and wall/surface applications. These fixtures are popular for commercial applications, apartment buildings, schools and multi-use facilities.

All SWP series fixtures operate on universal voltage (100-277V) with popular color temperatures (5000K and 4000K). Available in 15W, 29W and 50W, these LED fixtures come with Ushio's premium 5-year limited warranty.



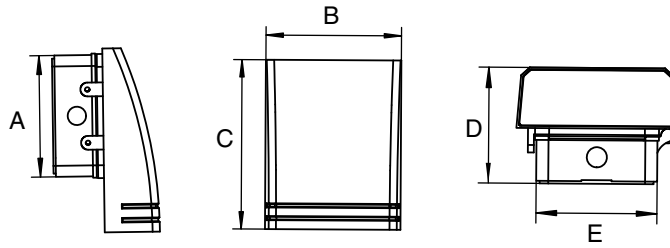
## FEATURES & BENEFITS

- Energy Saving
- DLC Qualified
- IP65 Outdoor Rated
- Operating Temperature: -4° F to 120° F
- Photocell / Sensor Compatible
- Long Life: 50,000 Hours
- 5-Year Limited Warranty

## APPLICATIONS

- Perimeter Lighting
- Pathway Lighting
- Entryway Lighting
- Security Lighting

# SPECIFICATIONS



A	B	C	D	E
5.25 in	6.30 in	7.87 in	4.00 in*	4.75

\* Applies to ADA (Americans with Disabilities Act) Standard

Watts (W)	Ordering Code	Description	Color Temp (K)	Lumens (lm)	Beam Angle	CRI	Rated Life (h)	Finish
15	1004653	● ● ● 15SWP/40K/BK	4000	1,740	110°	70	50,000	Black
15	1004654	● ● ● 15SWP/50K/BK	5000	1,797	110°	70	50,000	Black
29	1004655	● ● ● 29SWP/40K/DB	4000	3,268	110°	70	50,000	Dark Bronze
29	1004656	● ● ● 29SWP/50K/BK	5000	3,330	110°	70	50,000	Black
50	1004657	● ● 50SWP/40K/BK	4000	5,509	110°	70	50,000	Black
50	1004658	● ● 50SWP/50K/BK	5000	5,856	110°	70	50,000	Black

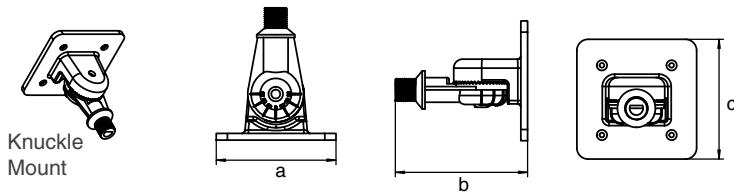
● IP65 ● DLC ● Title 24

## Accessories (Sold Separately)

- 1004733 = MT-SB-SWP/BK (Swivel Bracket for SWP - Black).
- 1004734 = MT-SF-SWP/BK (Slip Fitter Mount for SWP - Black).
- 1004735 = MT-KNC-SWP/BK (3/4" NPT Knuckle Mount for SWP - Black).
- 1004707 = SEN-PHO-BT-MT/MV (Button Photocell 120-277V).

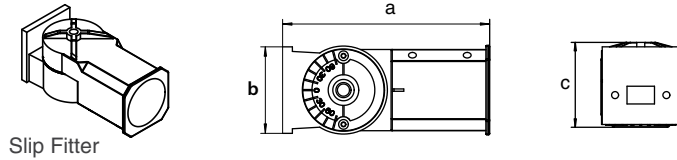


**SEN-PHO-BT-MT/MV**  
Button Photocell 120-277V



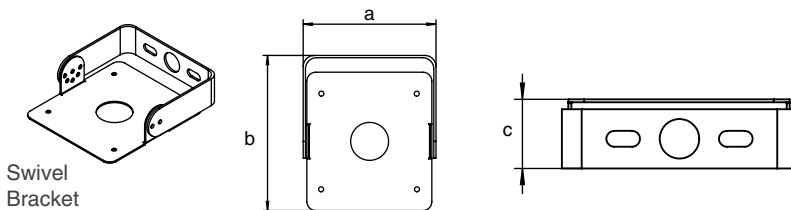
Knuckle  
Mount

A	B	C
4.21 in	4.65 in	4.21 in



Slip Fitter

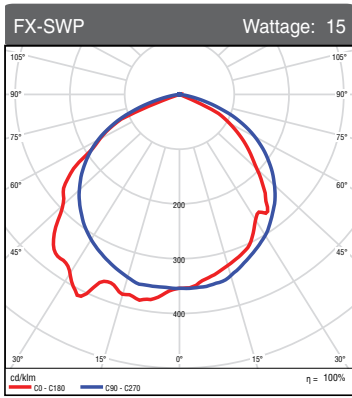
A	B	C
7.04 in	2.95 in	3.25 in



Swivel  
Bracket

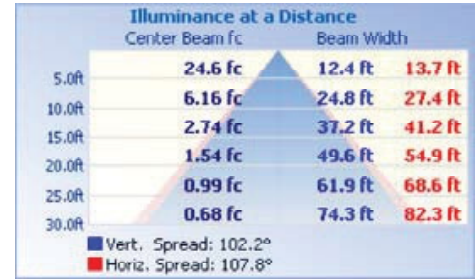
A	B	C
4.68 in	5.47 in	1.37 in

# PHOTOMETRICS CHART

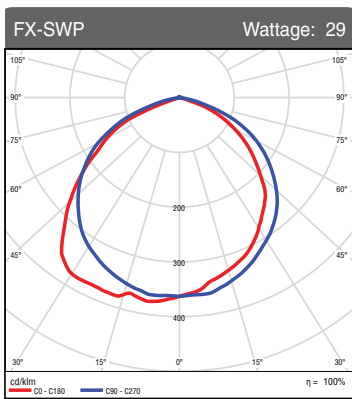


## Zonal Lumen Summary

Zone	Lumens	Luminaire
0-30	499.51	28.70%
0-40	833.73	47.90%
0-60	1488.04	85.50%
60-80	247.67	14.20%
70-80	50.72	2.90%
90-120	0.41	0.00%
90-180	1.70	0.10%
0-180	1740.13	100.00%

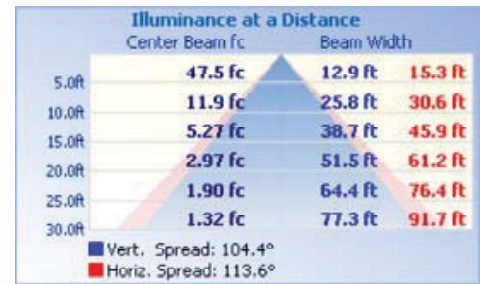


Total Luminaire Efficiency = 100.00%

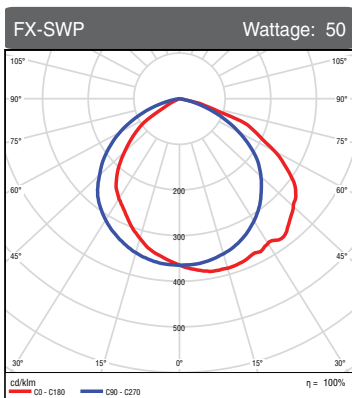


## Zonal Lumen Summary

Zone	Lumens	Luminaire
0-30	944.93	28.90%
0-40	1570.71	48.00%
0-60	2780.44	85.00%
60-80	480.97	14.70%
70-80	107.59	3.30%
90-120	0.85	0.00%
90-180	3.31	0.10%
0-180	3270.7	100.00%

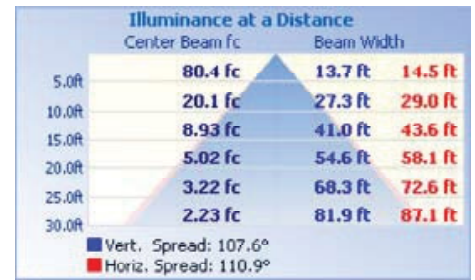


Total Luminaire Efficiency = 100.00%



## Zonal Lumen Summary

Zone	Lumens	Luminaire
0-30	1583.76	28.70%
0-40	2620.58	47.60%
0-60	4672.85	84.80%
60-80	825.93	15.00%
70-80	212.02	3.80%
90-120	0.02	0.00%
90-180	0.03	0.00%
0-180	5510.81	100.00%



Total Luminaire Efficiency = 100.00%