



Description

Altech's LED Linear High Bay is perfectly suited for warehouse and big box retailer applications, boasting 150 lm/W efficacy and a 5 year wrap-around warranty.



Applications

Warehouse Lighting Storage Units Exhibit Halls
Shopping Centers Indoor Arenas

Specs

Efficacy 150 lm/W
Input Voltage 100-277V
Finish White
Mounting Chain

Details

IP Rating IP50
Material Aluminum
Lens Frosted Polycarbonate
L70 Life 150,000 Hours
Warranty 5 Years
CRI 80+
Qualification UL, FCC, CE, RoHS
Chip Man. Philips
Whip Length (ft) 1.67'

Electrical

Power Factor 0.99
Frequency 50/60 Hz
Max THD 15%
Operating Temp. -40° F to 150° F
 -40° C to 65° C
Dimming 3 in 1 (Resistance, PWM, 0-10V)

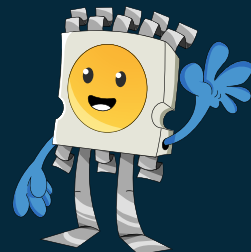
LED Linear High Bay

Product Information

ORDERING/DLC #:	Dimensions	Wattage	CCT	Lumens	Equivalent
U-LHB2-100-30	2'x2'	100W	3000K	14,000 lm	400W MH
U-LHB2-100-40	2'x2'	100W	4000K	14,500 lm	400W MH
U-LHB2-100-50	2'x2'	100W	5000K	15,000 lm	400W MH
U-LHB2-160-30	2'x2'	160W	3000K	22,400 lm	640W MH
U-LHB2-160-40	2'x2'	160W	4000K	23,200 lm	640W MH
U-LHB2-160-50	2'x2'	160W	5000K	24,000 lm	640W MH
U-LHB2-200-30	2'x2'	200W	3000K	28,000 lm	800W MH
U-LHB2-200-40	2'x2'	200W	4000K	29,000 lm	800W MH
U-LHB2-200-50	2'x2'	200W	5000K	30,000 lm	800W MH
U-LHB2-300-30	2'x2'	300W	3000K	42,000 lm	1,200W MH
U-LHB2-300-40	2'x2'	300W	4000K	43,500 lm	1,200W MH
U-LHB2-300-50	2'x2'	300W	5000K	45,000 lm	1,200W MH
U-LHB4-320-30	2'x4'	320W	3000K	44,800 lm	1,280W MH
U-LHB4-320-40	2'x4'	320W	4000K	46,400 lm	1,280W MH
U-LHB4-320-50	2'x4'	320W	5000K	48,000 lm	1,280W MH
U-LHB4-480-30	2'x4'	480W	3000K	67,200 lm	2,000W MH
U-LHB4-480-40	2'x4'	480W	4000K	69,600 lm	2,000W MH
U-LHB4-480-50	2'x4'	480W	5000K	72,000 lm	2,000W MH

Additional Notes

- 4000K and 5000K, 100-277V are stocked locally, check for ETA's
- Altech Electronics reserves the right to make periodic improvements to our product specs



Accessories

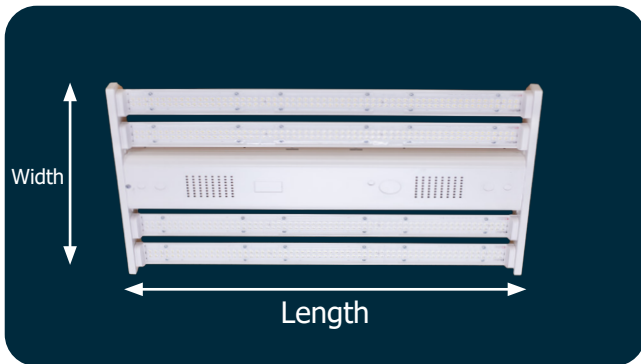


Compatible with controls and integrations



Phenix External Emergency Inverter (18470X-3) (optional)

Fixture Dimensions



U-LHB2
2' LED Strips

Fixture Wattage	Length	Width	Weight
100W, 160W 200W, 300W	24 in. (2 ft.)	18 in. (1.5 ft.)	10 lb.
	609.6 mm.	457.2mm.	4.54 kg

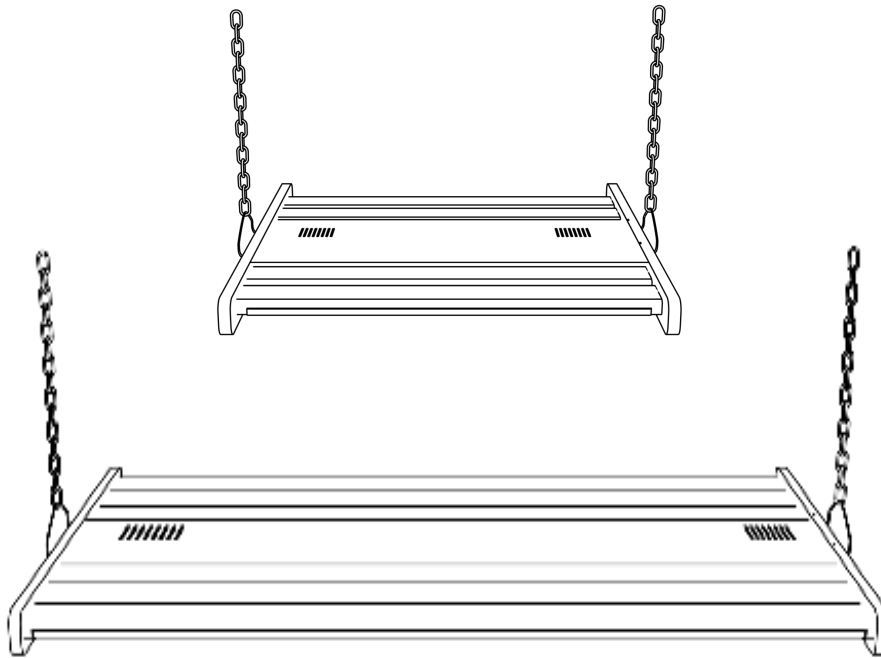


U-LHB4
4' LED Strips

Fixture Wattage	Length	Width	Weight
320W and 480W	48 in. (4 ft.)	18 in. (1.5 ft.)	25 lb.
	1,219.2mm.	457.2mm.	11.79 kg

Mounting Hardware

Chain Installation



LED Linear High Bay

Installation

1. Important: Shut the power down.
2. Hang the fixture.
3. Connect the power.

FG (Green/Yellow)
AC/L (Brown)
AC/N (Blue)

