



ARIA

Mounting Options

T1-SFLED

These are used as mounting options for flood/area lighting application. Made of high-grade die-cast aluminum with bronze polyester coating to withstand the harshness of the elements. Double-reinforced weld joints for durability and secure mounting. These accessories are sold separately.

Project	Catalog #
Distributor	Type
Prepared by	Date

SPECIFICATION FEATURES

Construction

High-grade die cast aluminum

Mounting

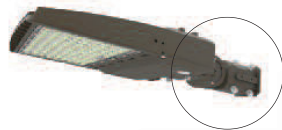
Designed for pole or wall-mounting with either an arm extension, slip fitter, U-bracket or trunnion mount

Applications

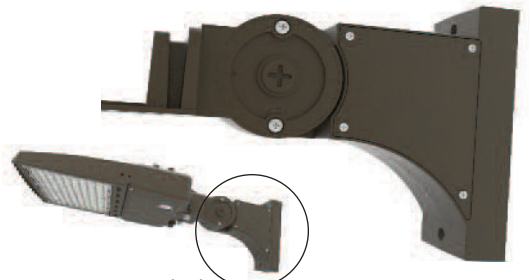
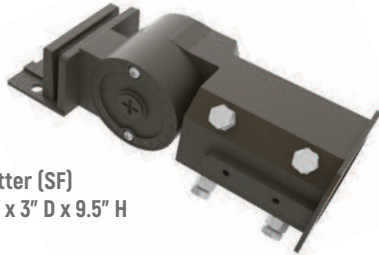
Ideal solution for industrial, commercial and other exterior applications

Warranty

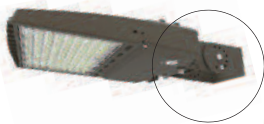
7 Years on Parts



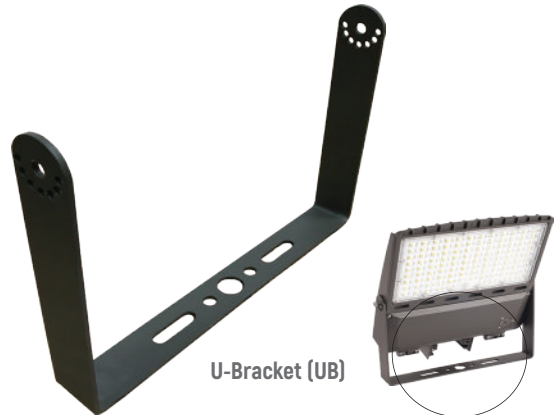
Slip Fitter (SF)
3.5" W x 3" D x 9.5" H



Arm Extension (AR)
3.5" W x 9.75" D x 6.75" H



Trunnion (TR)
5.5" W x 3" D x 7.5" H



U-Bracket (UB)