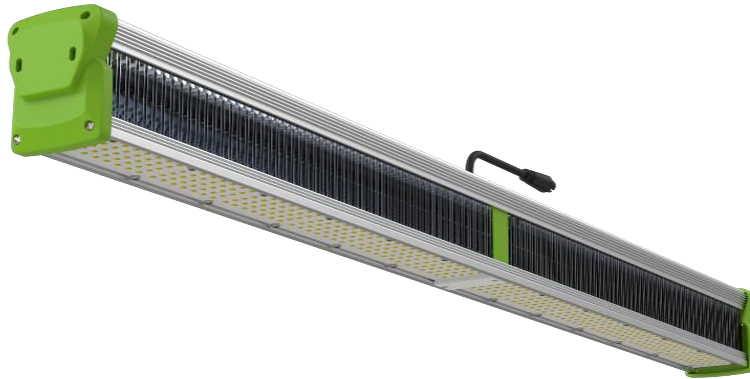


TotalGrow™ HI-Top 330 & 640

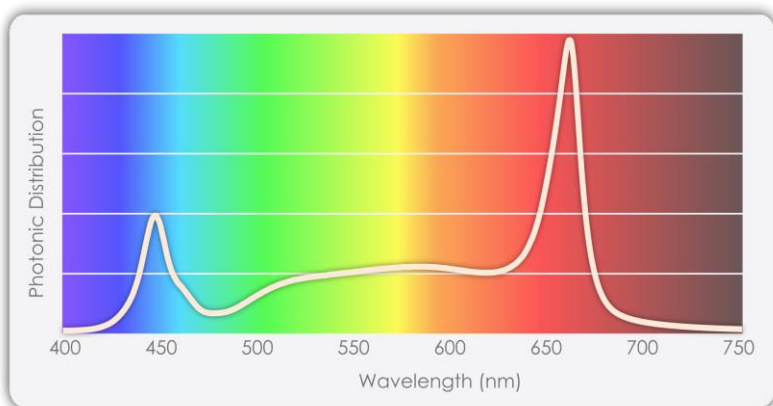


Performance Grow Lighting that Saves

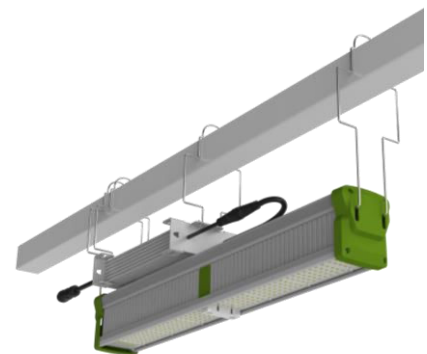
Achieve your target yields and quality.

Save time, money, electricity, and sales.

- 330W or 640W power at up to 3.1 $\mu\text{mol}/\text{J}$ for the light intensities your plants need
- Robust, reliable and streamlined design for simple utilization
- Side reflector add-on for uniform, efficient edge lighting
- Full spectrum for exceptional versatility

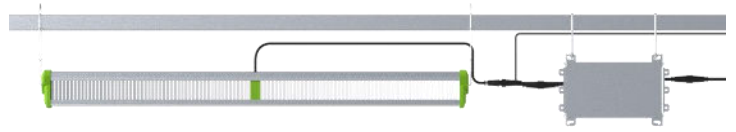
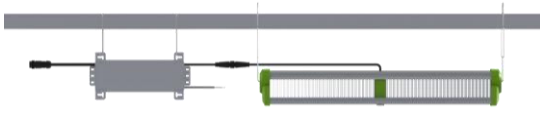


Spectrum/Power/Efficacy Customization Available



contact: info@totalgrowlight.com

The TotalGrow HI-Top light bar is an ideal, cost-effective, utility-incentive-friendly fit for greenhouse or indoor top-lighting with rugged construction and a narrow-profile body that mounts easily to support structures. Excellent efficacies are maximized by a versatile and highly effective grow spectrum, minimal shadowing, and optional side reflectors for uniform light delivery. Daisy-chain power and dimming control for low cost installation and operation.







HI-Top Product Specifications:	HI-Top 330	HI-Top 640BF	HI-Top 640	HI-Top 640 HE
Product Number	TG33B4-R0J-28-D1-K0BJ6	TG64B4-R2J-25-D1-K0BA6	TG64B4-R0J-29-D1-K0BA6	TG64B4-R1J-31-D1-K0BA6
Output	910 $\mu\text{mol/s}$	1610 $\mu\text{mol/s}$	1825 $\mu\text{mol/s}$	2000 $\mu\text{mol/s}$
Efficacy	2.8 $\mu\text{mol/J}$	2.5 $\mu\text{mol/J}$	2.9 $\mu\text{mol/J}$	3.1 $\mu\text{mol/J}$
Power Consumption	330W	640W		
Input Voltage (VAC)	100-277 / 277-480*	100-277 / 277-480*		(*HV 480V Models)
Daisy-Chain Limit @120/240/480V	4 / 7 / 14* Lights	2 / 4/ 8* Lights (with linking cables)		
Current @120/240/480V	2.8 / 1.4 / 0.7* Amps	5.3 / 2.7 / 1.3* Amps		
Length x Width x Height	25 x 3 x 4 inches	43 x 3 x 4 inches		
Weight (lbs.)	6 (bar) + 4 (driver) = 10	11 (bar) + 6 (driver) = 17		
Dimmable	0-10V + 12V aux power	0-10V + 12V aux power		
Projected Service Life / Warranty	50,000 hours / 5 year			
Waterproof	IP66			



Usage Guidelines

Every application is unique, and our lighting experts will gladly provide you with a detailed, custom light plan (contact info@totalgrowlight.com). In the meantime, the following chart may provide helpful generalizations:

	Light Level Target	Low	Medium	High			
	Plant Size	Small	Medium	Large			
Examples		Germination, Cuttings, Microgreens	Late Propagation, Lettuce, Basil	Tomatoes, Moderate Cannabis Lighting			
							
Supplemental (Greenhouse Sun + TotalGrow Lights)		330W	640W	330W	640W	330W	640W
	Light Intensity (PPFD):	50 $\mu\text{mol/m}^2/\text{s}$		100 $\mu\text{mol/m}^2/\text{s}$		300 $\mu\text{mol/m}^2/\text{s}$	
	Coverage (sq. ft)	170	325	80	170	25	50
	Spacing (ft)	13	18	9	13	5	7
Height (ft)	7-11	10-15	5-8	7-11	3-5	4-6	
Sole Source (100% TotalGrow Lighting)	Light Intensity (PPFD):	120 $\mu\text{mol/m}^2/\text{s}$		270 $\mu\text{mol/m}^2/\text{s}$		1000 $\mu\text{mol/m}^2/\text{s}$	
	Coverage (sq. ft)	72	140	30	60	9	16
	Spacing (ft)	8.5	12	5.5	8	3	4
	Height (ft)	5-6	7-9	3-4	5-6	2	3

- Shorten growth cycles • Improve yields and quality • Reliably produce year-round
- Reduce 40-60% of energy compared to HPS • Long, low maintenance life
- Excellent light uniformly • Easy installation • Versatile, aesthetic, customizable spectrum