



Description

The Sensor Ready High Output UFO High Bay is the most versatile fixture Altech has produced to date. With an IP67 rating, high efficacy lumen output and features a built-in sensor compartment for easy installation.

* Sensor sold separately



Not all product variations listed on this page are DLC Premium qualified. To ensure that a specific model is qualified, visit www.designlights.org/search

Applications

Warehouse Lighting Cold Storage Exhibit Halls
Shopping Centers Indoor Arenas Gymnasiums

Specs

Efficacy 165 lm/W
Input Voltage 100-277V
Finish Black

Details

IP Rating IP67
Material Die Cast Aluminum
Lens Clear Polycarbonate
L70 Life 150,000 Hours
Warranty 5 Years (Standard) | 10 Years (Optional)
CRI 80+
Qualification UL, DLC 5.1, FCC, CE, RoHS
Chip Man. Philips
Whip Length(ft) 4'

Electrical

Power Factor 0.99
Frequency 50/60 Hz
Max THD 15%
Operating Temp. -40° F to 150° F
 -40° C to 65° C
Dimming 3 in 1 (Resistance, PWM, 1-10V)

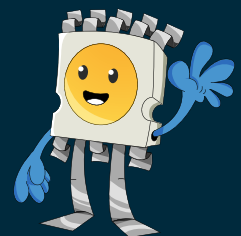
LED SENSOR READY HIGH BAY UFO

Ordering Information

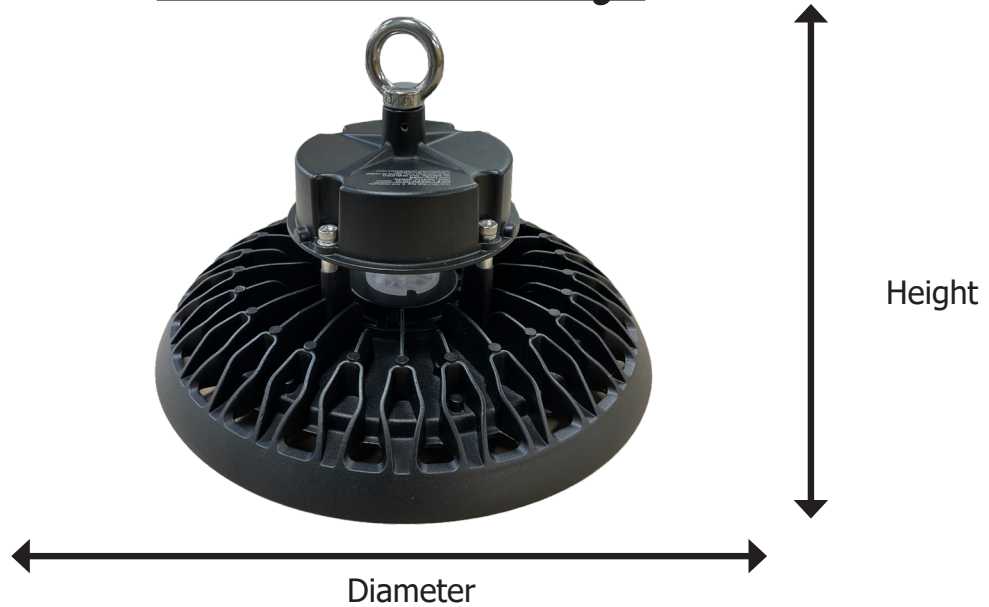
ORDERING/DLC #:	Wattage	CCT	Lumens	Equivalent
U-HOUFO-100-30	100W	3000K	15,320 lm	500W MH
U-HOUFO-100-40	100W	4000K	15,900 lm	500W MH
U-HOUFO-100-50	100W	5000K	16,300 lm	500W MH
U-HOUFO-150-30	150W	3000K	23,560 lm	1000W MH
U-HOUFO-150-40	150W	4000K	24,168 lm	1000W MH
U-HOUFO-150-50	150W	5000K	24,776 lm	1000W MH
U-HOUFO-240-30	240W	3000K	37,200 lm	1500W MH
U-HOUFO-240-40	240W	4000K	38,160 lm	1500W MH
U-HOUFO-240-50	240W	5000K	39,120 lm	1500W MH

Additional Notes

- 4000K and 5000K, 100-277V are stocked locally, check for ETA's
- Altech Electronics reserves the right to make periodic improvements to our product specs



Fixture Dimensions and Weight



U-HOUFO-100W		
Diameter	Height	Weight
11.5 in.	5 in.	5.5 lb.

U-HOUFO-150W		
Diameter	Height	Weight
13.5 in.	5 in.	7 lb.

U-HOUFO-240W		
Diameter	Height	Weight
15.5 in.	5 in.	9 lb.

Accessories and Options



Compatible with controls and integrations



Motion Sensor



Opening diameter = 0.75"

Pendant Adaptor (optional)

Motion Sensor Installation

Step 1



Unskrew motion sensor cap at the center of High Bay UFO

Step 2



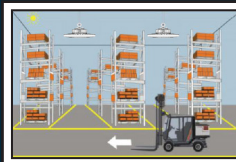
Insert and skrew in motion sensor

Step 3

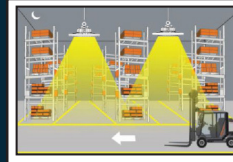


After fully inserted, Motion Sensor is fully installed and ready

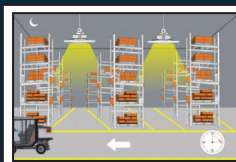
Motion Detection



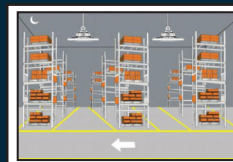
1. With sufficient ambient light, the sensor does not turn the fixture on.



2. With insufficient ambient light, the sensor turns the fixture on when motion is detected.



3. After hold time, the sensor dims the fixture to a low light level if no new motion is detected.



4. After stand-by-period, the sensor turns off the fixture if no motion is detected in its zone.

This 3-Step Dimming/Daylight Sensor with remote control, provides a simple energy-saving solution to use light only when and where you need it. The motion sensor can be mounted at a maximum of 50 ft above the ground and still detect moving objects within a 60 ft radius. This sensor also has a daylight sensor for further lighting customization and energy savings.